



FIRE PUMPS



Better Technology Group CO.,LTD.



E-CATALOGUE



ZJ·BETTER

www.betterfirepump.com



Content

About Us

Timeline

Testing Lab

What is UL or FM?

Certificates

Application

Products

Projects

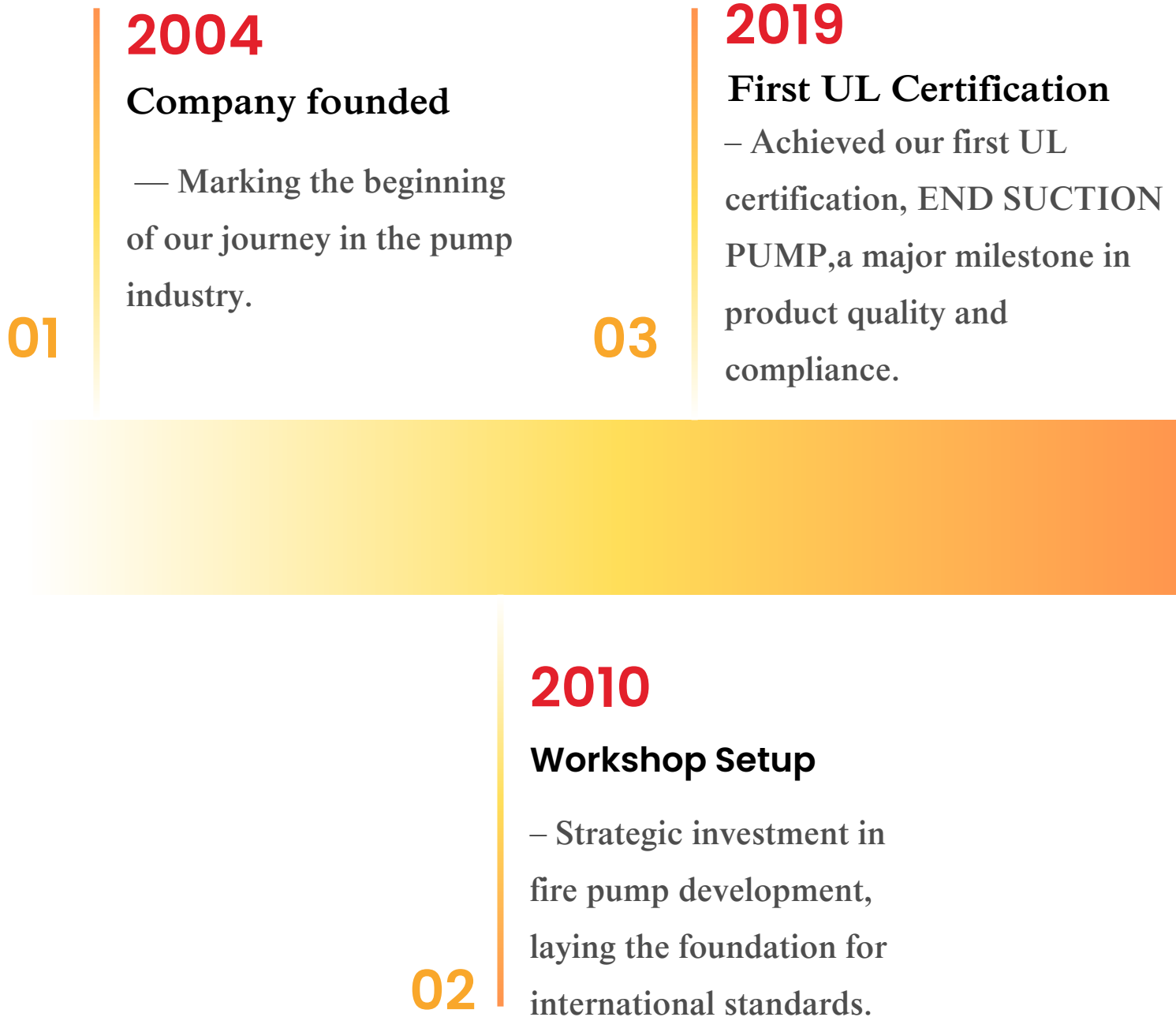


About Us

- **Founded 2004**
- **Factory: 4000m²**
- **Head Quartered: Quzhou city, Zhejiang Province**
- **Office: Zhengzhou city, Henan Province**
- **200 employees, include 30 experienced engineers.**

As one of the few manufacturers certified with UL, CE, and ISO9001, we focus on the development and production of high-performance fire pumps. Our products are widely used in petrochemical facilities, high-rise buildings, hospitals, and large commercial complexes.

> Timeline



05

2021

– Obtained UL certification for split case pumps, further enhancing our product range.

07

2025

– Received UL certification for diesel engines, achieving full certification coverage across core fire pump components.



ZJ·BETTER®

2020

– Improved and expanded the end suction pump series to meet broader application needs.

2023

– Awarded UL certification for fire pump motors, proving our in-house motor capabilities.

> Motor Testing Laboratory

Issued by UL LLC

Certificate of Achievement



BETTER TECHNOLOGY GROUP (ZHEJIANG) MOTOR CO LTD

Building 5, No.17, Xinghang One Road, Hangbu, Quzhou, Zhejiang, 324004, China

Successfully performed testing to the Standard(s) listed below and had data accepted by UL under the Witnessed Test Data Program (WTDP) as described within the referenced project's datasheets.

Project Number: 4790465834

Testing Performed:

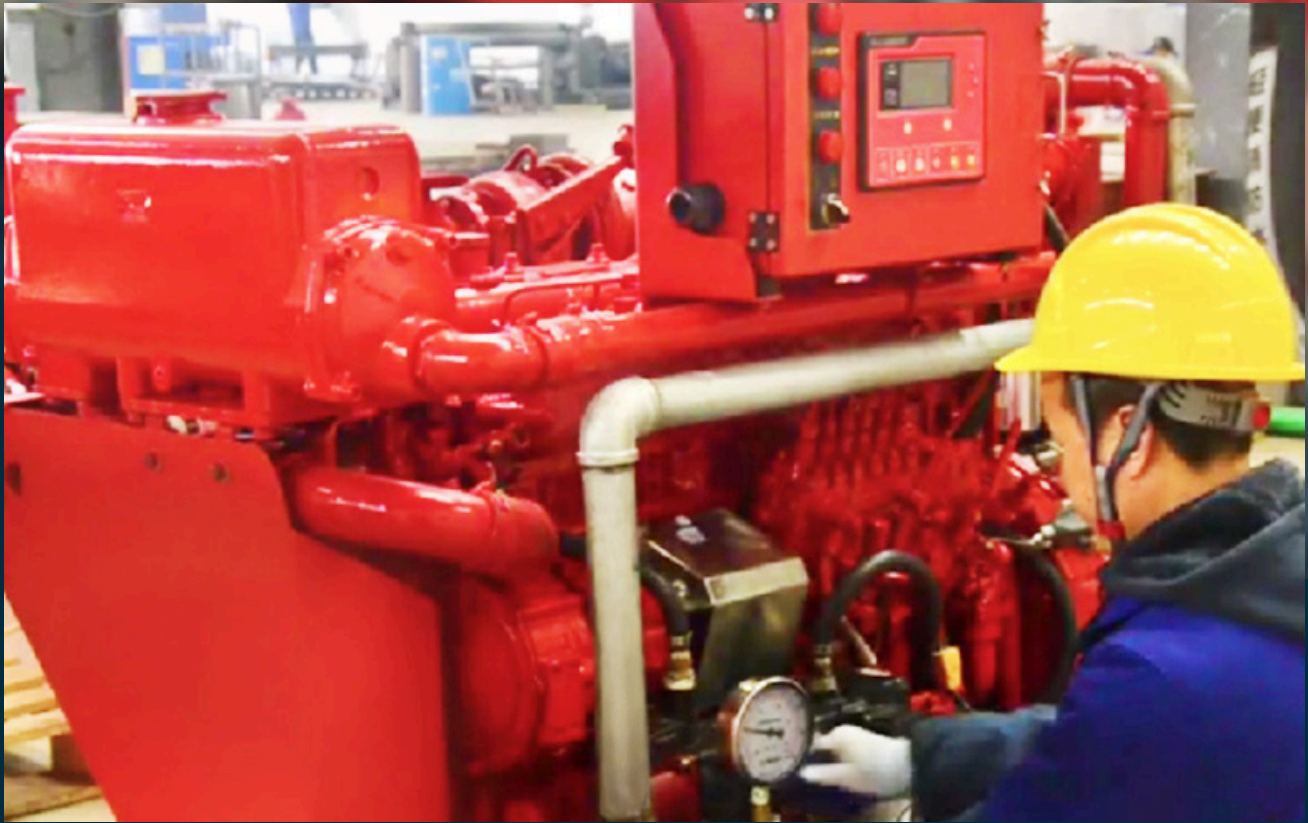
UL 1004-1, Rotating Electrical Machines - General Requirements, Edition 2

UL 1004-5, Fire Pump Motors, Edition 2

Date(s) of Testing: 2022-12-30


Kevin Mahaffey
DAP Program Manager

› Diesel Engine Laboratory



- Built to support UL & FM testing.
- Complete ventilation and exhaust system.
- Safety monitoring and alarm system.
- Professional diesel engine engineers.
- Extensive experience in certification testing.



> **Pump Test Center**

Testing Functions

- Flow rate testing
- Head (pressure) testing
- Power measurement
- Efficiency calculation
- Vibration and noise monitoring

Intelligent Capabilities

- Water tank circulation system
- Real-time data acquisition system
- Automatic generation of performance curves
- Automated test report generation
- Video recording of testing process for traceability

> UL Product Series

01



End Suction Pump

- Capacity: 50-2000 GPM
- Head: 80-250 PSI



Scan for
more
details

02



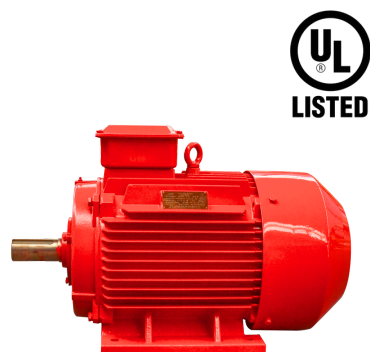
Split Case Pump

- Capacity: 100-3000 GPM
- Head: 90-250 PSI



Scan for
more
details

03



Motor

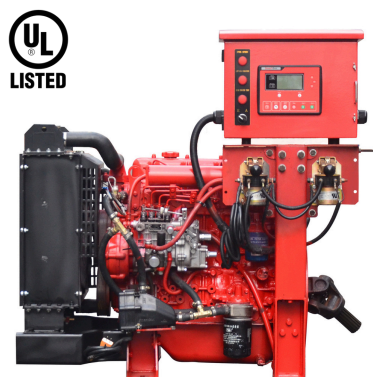
- 15HP-430HP 50HZ
- 100HP-430HP 60HZ



Scan for
more
details

> UL Diesel Engines

04



JY495P38H

2980rpm	48HP	36K W
2650rpm	44HP	33K W
2350rpm	39HP	29K W



Scan for
more
details

05



JY495P39

3000rpm	52HP	39K W
2650rpm	52HP	39K W
2350rpm	44HP	33K W



Scan for
more
details

06



JY4102P79H

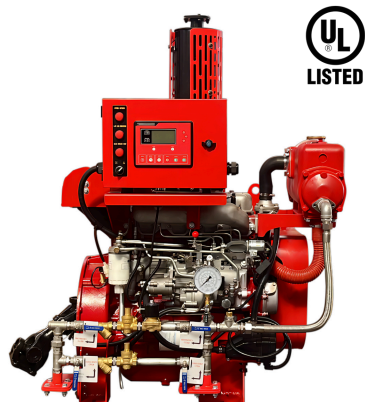
2980rpm	100HP	75K W
2650rpm	93HP	69K W
2350rpm	82HP	61K W



Scan for
more
details

> UL Diesel Engines

07



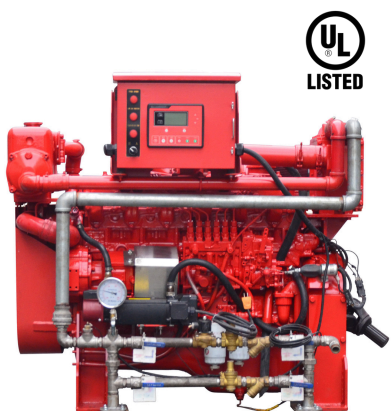
JY4102P84

2970rpm	113HP	84KW
2650rpm	101HP	75KW
2350rpm	89HP	66KW



Scan for
more
details

08



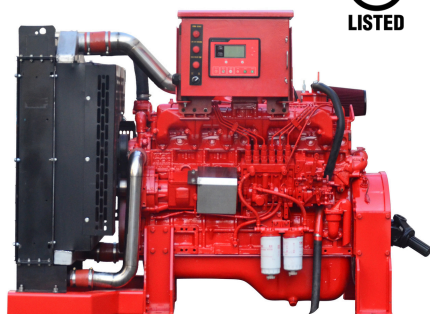
JY6105P155

2955rpm	205HP	153KW
2650rpm	163HP	122KW
2350rpm	110HP	82KW



Scan for
more
details

09



JY6105P145H

2950rpm	184HP	137KW
2650rpm	176HP	131KW
2350rpm	156HP	116KW



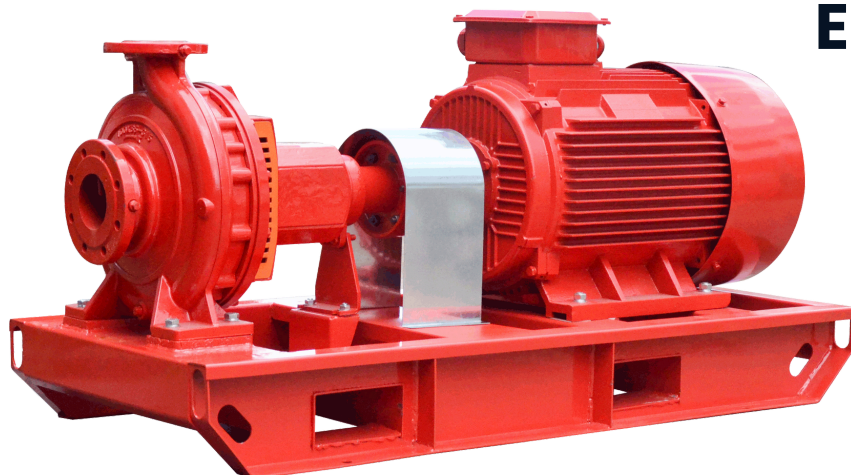
Scan for
more
details

> **UL Electric Pumps**



UL Electric End Suction Pump

01

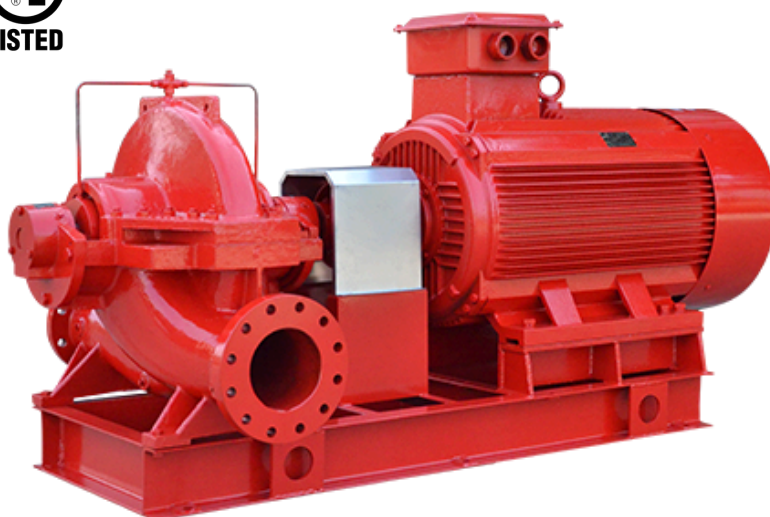


Scan for
more details



UL Electric Split Case Pump

02

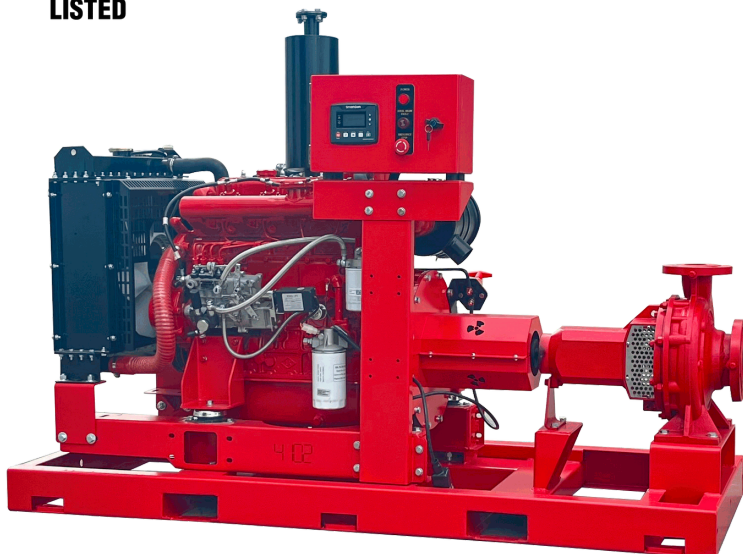


Scan for
more details

> UL Diesel Pumps



01



UL Diesel End Suction Pump



Scan for
more details



02



UL Diesel Split Case Pump



Scan for
more details

> **Vertical Turbine Pump**

01



Scan for
more details

• **Angle Gear Box**



Scan for
more details

02



Scan for
more details

• **Hollow Shaft Motor**



Scan for
more details

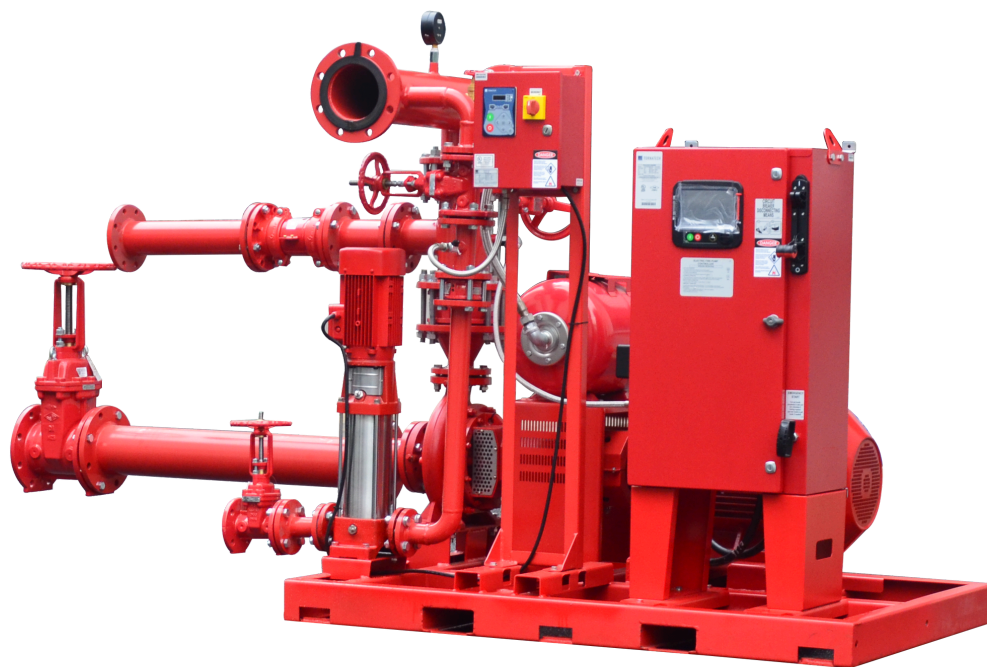
> ***UL Fire Pump Set***

03

UL Electric Pump Set



Scan for
more details



04

UL Diesel Pump Set



Scan for
more details



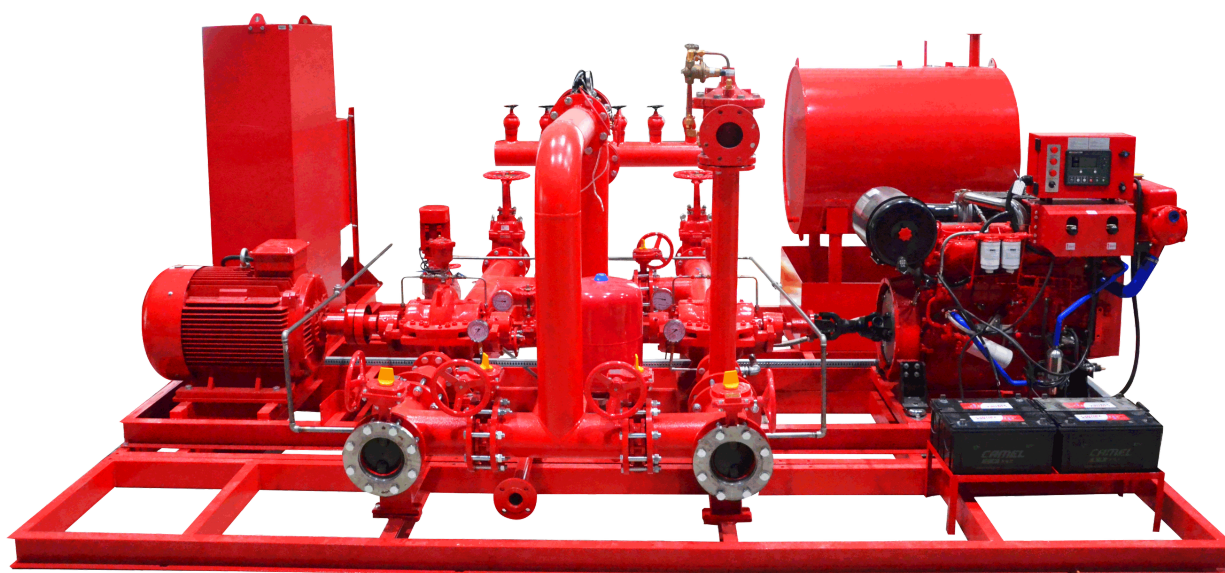
> *Fire Pump Set*

05

UL/FM Fire Pump Set



Scan for
more details

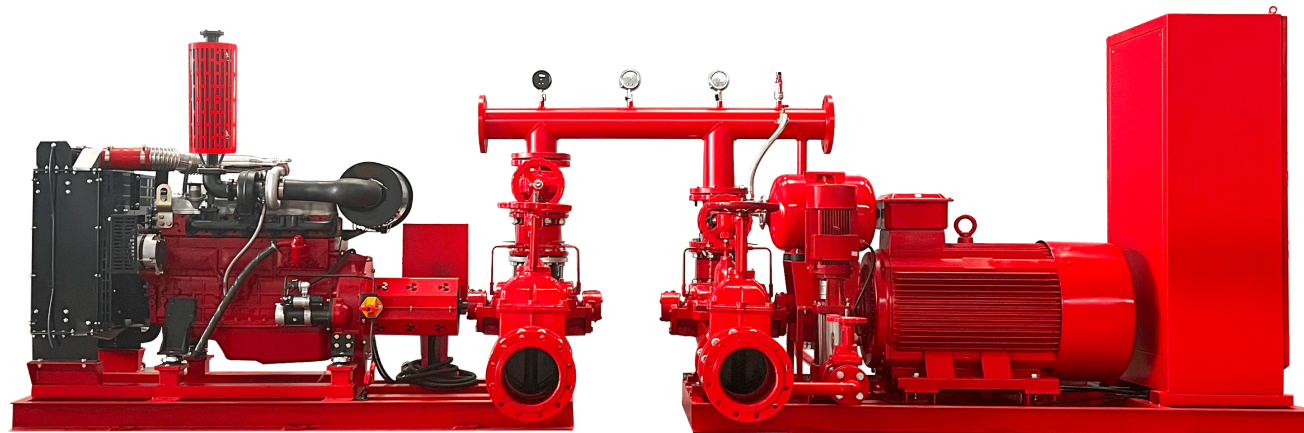


06

Fire Pump Set



Scan for
more details



> *Fire Pump Set*

07

**Fire Pump Set
with
rain cover**



Scan for
more details

08

**Fire Pump Set
with
Protective cover**



Scan for
more details

09

Container Fire Pump System



Scan for
more details

Projects



Melbourne



**Diesel Driven Pump
with Weatherroof**



Mexico

**Diesel Driven
Vertical Turbine Pump**

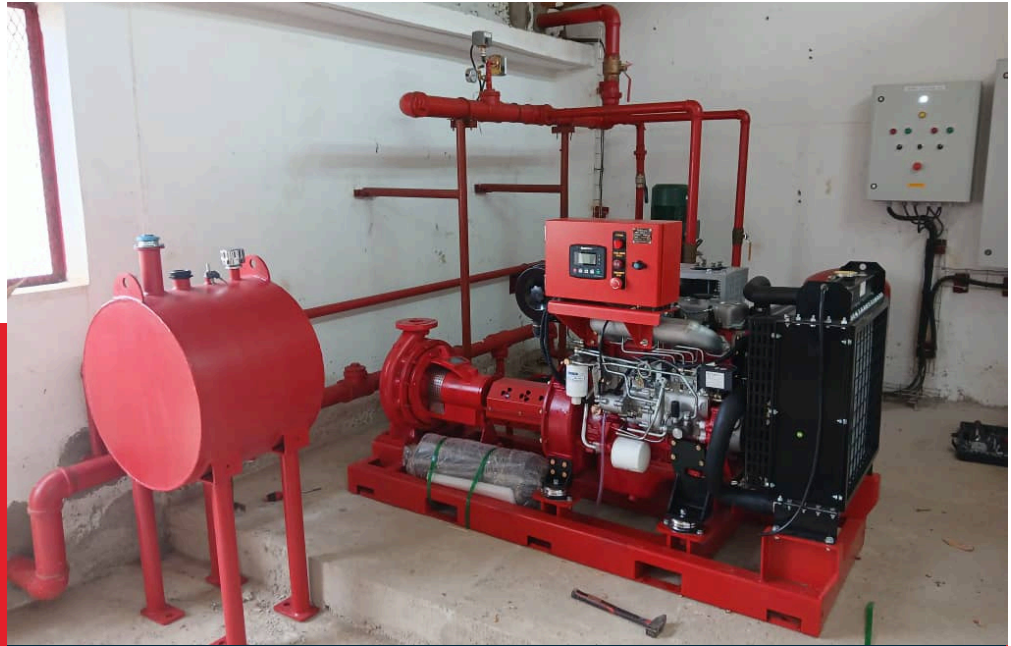


Projects



Ivory Coast

- Diesel Driven Pump
- Jockey Pump



Mexicali

**Diesel Driven
Split Case Pump**

Jockey Pump

Projects

Myanmar 

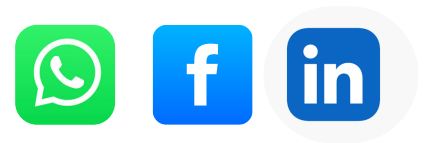
Fire Pump Room

- Electric Pump
- Diesel Pump
- Jockey Pump
- Controller
- Fuel Tank





Thank You !



**For inquiries,
contact us.**

**www.betterfirepump.com
zjbetter@119pump.com**

